



ENVIRONMENTAL IMPACT REPORT OUR OPERATIONS

Furness Partnership



OUR COMMITMENTS

At Furness Partnership, we are committed to addressing and drastically reducing our environmental impacts, not just within construction, but within our everyday operations as well.

Our aim is to track our emissions and enable staff to have an impact on both an individual and organizational level.

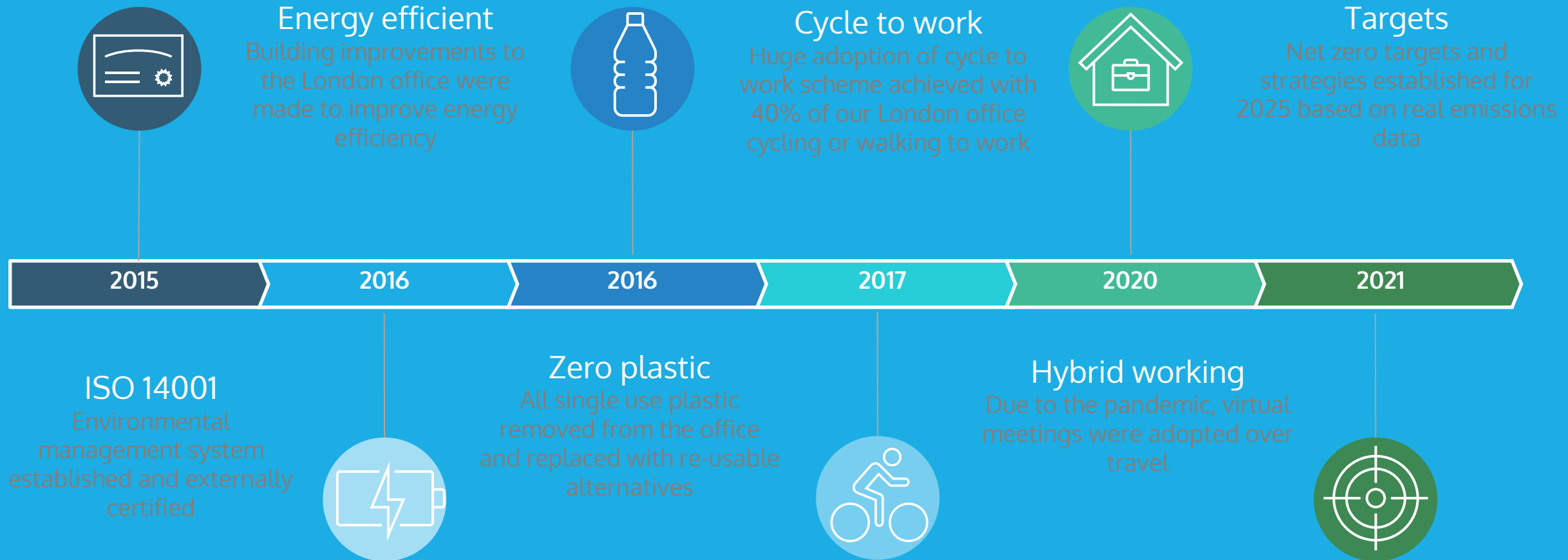
This report sets out our in-house emissions and efforts to tackle them.



Mike Furness
Director
Katy Gunter
Sustainability Lead



OUR ACHIEVEMENTS SO FAR



Energy efficient
Building improvements to the London office were made to improve energy efficiency



Zero plastic
All single use plastic removed from the office and replaced with re-usable alternatives

Cycle to work
Huge adoption of cycle to work scheme achieved with 40% of our London office cycling or walking to work



Hybrid working
Due to the pandemic, virtual meetings were adopted over travel



Targets
Net zero targets and strategies established for 2025 based on real emissions data



OUR TARGETS



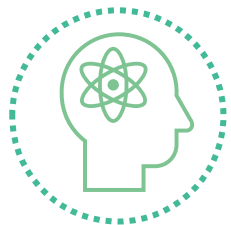
Net zero operational emissions by 2025

We aim to reduce our emissions as much as possible and offset any remainders



Reduce emissions by 10% YoY

By quantifying our emissions we can target impact areas for effective reduction



Empower staff to make sustainable choices everyday

Provide the knowledge and resources our team needs to reduce their carbon footprint





DEFINING KEY IMPACT AREAS



Scope 1

Direct emissions from owned or controlled sources such as fuel combustion, company vehicles and heating

- We have no direct emissions



Scope 2

Indirect emissions from the generation of purchased energy

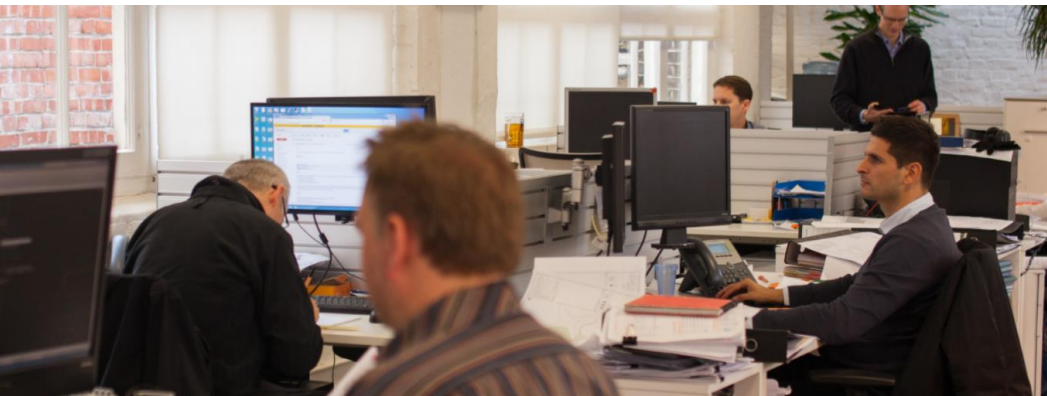
- Office electricity & heating



Scope 3

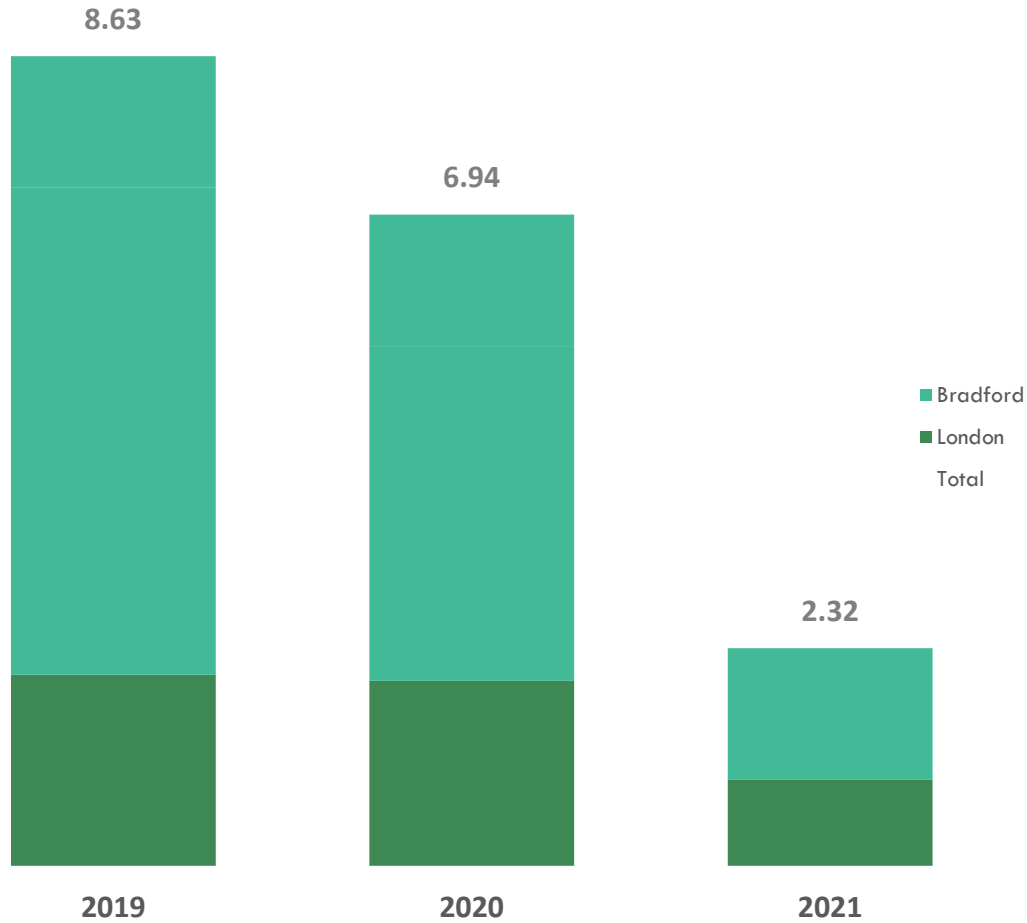
All other indirect emissions resulting from an organisation's supply chain

- Travel- business & commuting
- Office waste
- Office supplies





Furness Partnership Carbon Emissions as a Result of Electricity Usage- teCO₂



SCOPES 1&2

As engineering consultants, we have no direct emissions.

Our only source of Scope 2 emissions is through energy consumption within the offices.

We have achieved a natural decline in usage through working from home processes during the pandemic.

Both offices are on green energy tariffs with 60% renewable energy supply with the remainder being offset.

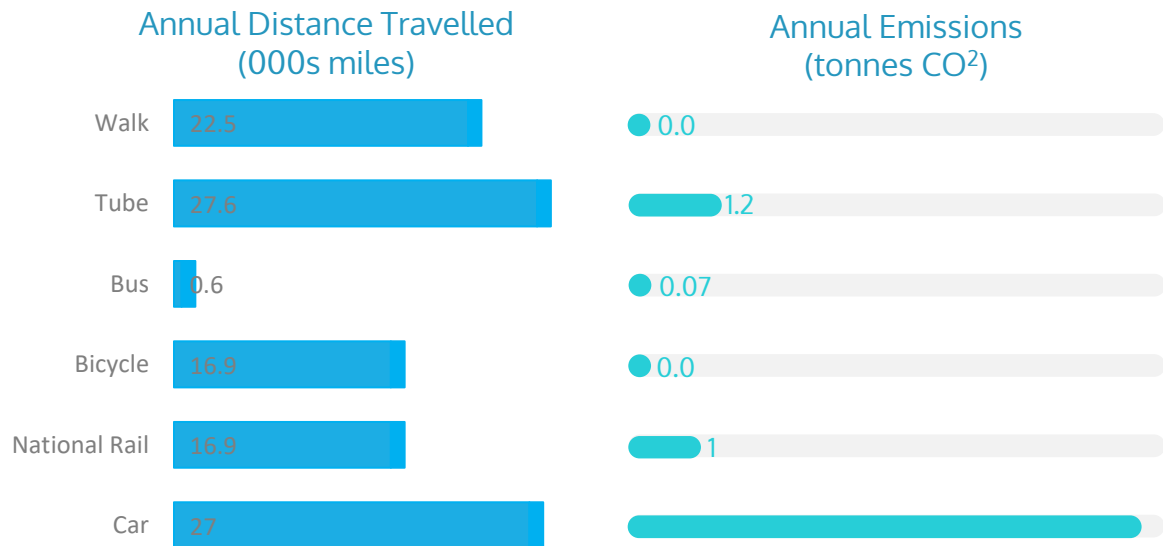
We have also undertaken upgrades on both office buildings to improve energy efficiency.

SCOPE 3

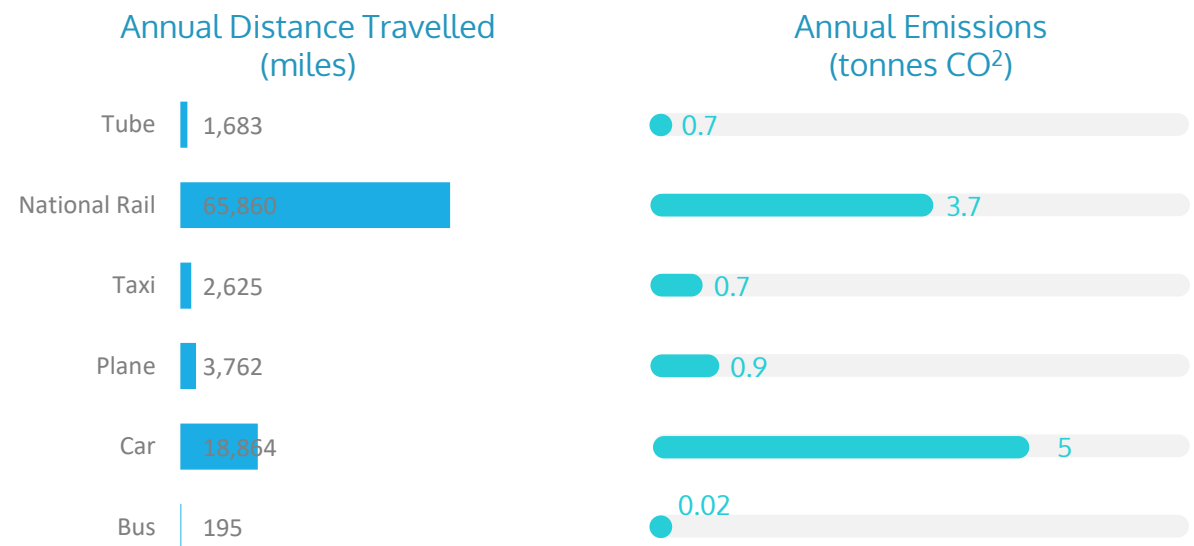


- ∅ Our biggest impact area within scope 3 is travel. The below graphs lay out the milage travelled and relevant emissions.
- ∅ These emissions have been calculated based on travel expenses and staff surveys.
- ∅ Due to the COVID pandemic, we have calculated our travel emissions data based on 2019 activities as the last fully operational year.
- ∅ The Bradford office is not fully accessible by public transport and the leadership team in the office have begun a process of trying to explore alternatives to driving to work.
- ∅ The London office is centrally located and lends itself to a broader range of commuting methods with lower carbon emissions. We provide our staff with cycling and changing facilities to encourage low emission travel and almost half our London office cycle or walk to work.

Staff Commuting by Type and Emissions (2019)



Staff Business Travel by Type and Emissions (2019)





TOTAL EMISSIONS



Total operational carbon footprint of 1.3 teCO₂ per person

Area of Operations	Emissions (tonnes CO ₂ equivalents)
Commuting	9.4
Business Travel	10.4
Paper Usage	2.8
Waste	0.2
Electricity	8.6

These are our total emissions calculated using UK Gov 2021 emission factors, across both offices.

These represent the highest impact areas and are thus our focus for reduction.

We are proud of our relatively low emissions per person but recognise there is still a lot of work to do!



OUR STRATEGY



Reduce transport emissions through increased virtual meetings

Encourage and enable more staff members to take low carbon forms of transport through access to bike schemes, changing facilities & research into other transport options



Reduce office energy usage through building improvements & conservative practices

Educate staff and collaborators on sustainable practices through workshops and regular communications



CONTACT US



London Office

20 Britton Street,
London,
EC1M 5TX
Tel: 020 7490 4353
Fax: 020 7490 4354

info@furnesspartnership.com



Bradford Office

The Paper Hall
Anne Gate
BRADFORD
BD1 4EQ
Tel: 01274 392092

mail@furnesspartnership.com

